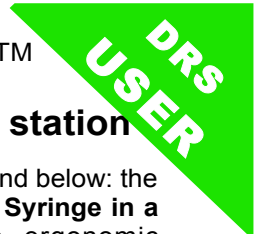
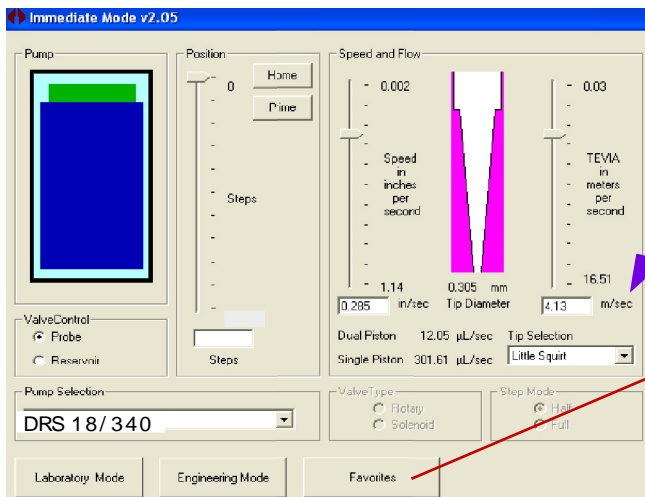


DRD™ Dual Resolution Syringe DRS™

PATENTED Complete Bench-top, PC-controlled Liquid-Handling station

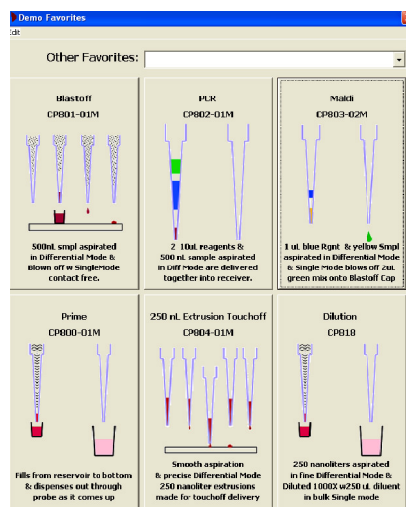


Includes everything shown to the left and below: the unique **DRS 18/340 Dual Resolution Syringe in a Hamilton PSD/4 type pump drive**, ergonomic hand Roboprobe for picking up and ejecting tips, vivid intuitive PC-driven software which gives instant graphic one-click access to 6 Favorite applications programs (which you can customize), and unprecedented control and information over speed and flow rates to make your aspirations and deliveries work just like you want. For example, you can select the **TEVIA™ (Tip Escape Velocity)** you want to give controlled or contact-free Blastoff™ delivery. A powerful data base, starter set of disposable tips, colored dyes, bottles, tubing. You just provide the PC.



A click on the "Favorites" button brings up a 6-pack of your Favorite applications – one click and your favorite runs its prompts.

You also get access to a database and ability to write and store your programs for instant graphics retrieval.



SPECIFICATIONS

- Size:** Pump module 5"(13 cm) high X 2"(4.5 cm) wide X 6"(15 cm) deep.
- Electrical source:** AC 110-240 VAC 1.5A 50-60 Hz
- Differential Mode:** Resolution 42.4 uL/inch -- same as 100 uL syringe -- up to 18 uL maximum volume. Aspirate/dispense precision standard deviation typically 0.006 uL (6 nanoliters).
- Bulk or Single Mode:** Resolution 1,058.4 uL/inch -- same as 2.5 mL syringe -- up to 340 uL maximum volume. Flow rate up to 1.2 mL/second, able to impart sample tip escape velocity of several meters/second even through tips with conventional IDs. Touchless Blastoff precision standard deviation typically 0.01 - 0.03 uL
- Resolution Multiplier:** Differential mode resolution is 25 times finer than Single (Bulk) mode.
- Disposable tips:** Tip internal diameter 0.012" (0.30 mm) or 0.014" (0.36 mm)

ORDERING INFORMATION for DRS 18 / 340 Bench-top Pump USER System

Part No. 81326-18/340 \$5,995.00 USD

DRS 18/340 with Hamilton PSD/4 type drive, ergonomic handheld Roboprobe for picking up and dispensing tips, with optional frame holder. DRD Visual Basic software with graphic GUI and data-base, User Manual, 384 LS3 0.012" or LS4 0.014" ID tips, colored eye-dyes, reagent bottle, tubing, DB15-DB9 and power socket cable, AC/24V DC converter power supply, Blastoff™ cap. USER must supply PC

DRD Liquid Handling (978) 879-9014

www.drliquidhandling.com

sales@drliquidhandling.com